



Powerful illumination

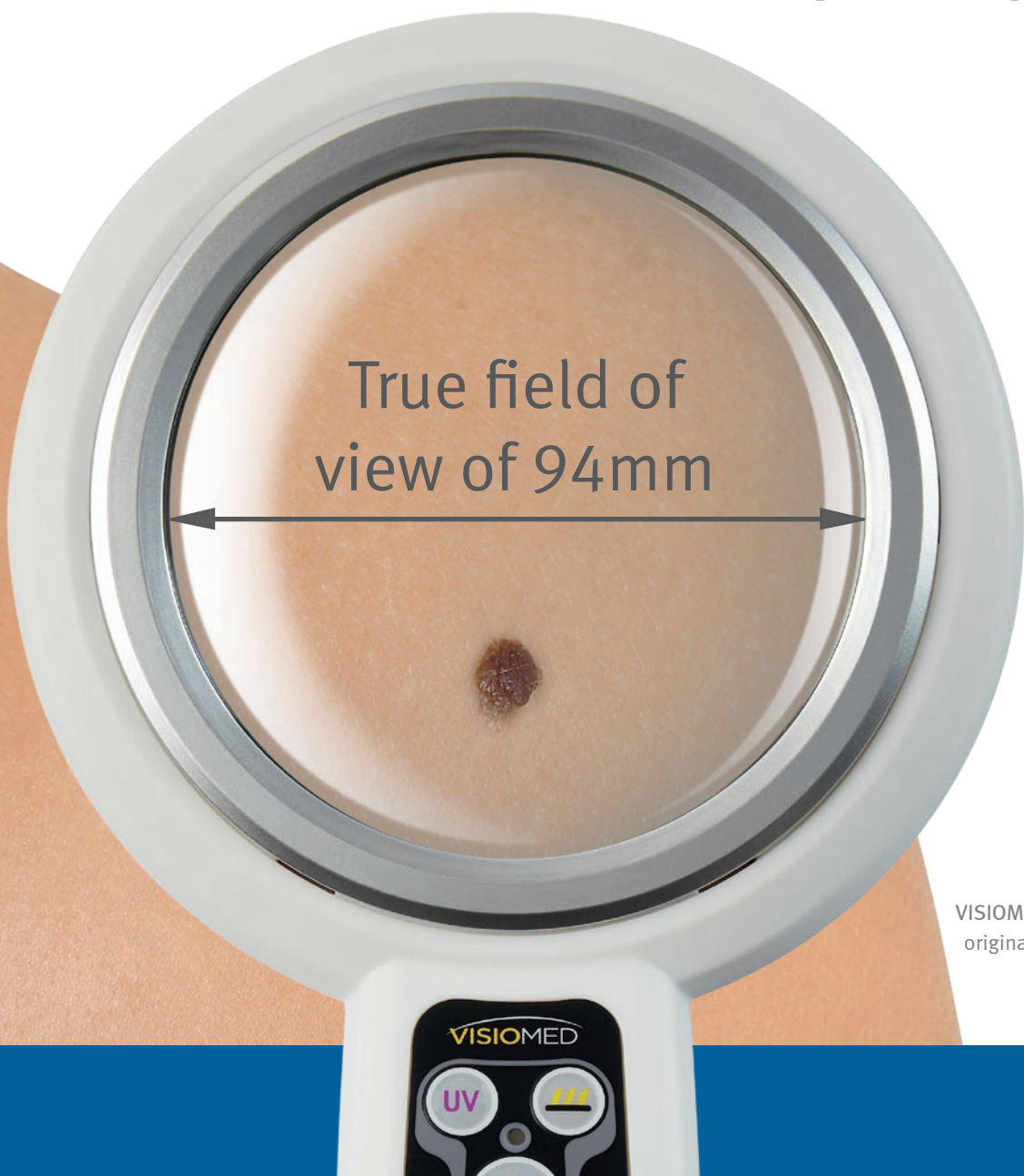
Several levels of illumination

Distortion-free magnification

Intelligent charging management

**Reliable diagnostic support**

Ultra-light design



VISIOMED Optima UV  
original scale 1:1

# VISIONMED Optima – Quality Made Easy

Whether used for clinical diagnosis or to obtain an overview prior to a skin cancer screening: with its maximum field of view and an illumination close to daylight, the **VISIONMED Optima** magnifying examination glass offers optimum support in day-to-day practice. The ultra-low weight teamed with a powerful battery allows comfortable handling.



## Your advantages at a glance:

- ✓ Two lighting modes in one appliance
- ✓ Maximum field of view within Ø 94mm
- ✓ High-performance lithium-ion battery
- ✓ Easy charging via USB or charging station
- ✓ Ultra-light design (only 330 g)
- ✓ Including protective cover made of robust nylon

\*depending on the  
appliance version



**Large lens with distortion-free view**

With 2-fold magnification, the quality lens ensures distortion-free viewing within a diameter of 94mm for a quick and successful examination.

**The type of lighting is crucial**

Natural color reproduction is indispensable for the diagnostic assessment of all changes in skin. **VISIOMED Optima** supplies precisely mixed light that comes close to the natural spectrum of daylight.

The microprocessor-controlled LEDs allow for true-color and consistent illumination as bright as daylight – even with decreasing battery power.

**Flexible charging via USB or charging station**



For further enhanced handling and flexibility, **VISIOMED Optima** has been equipped with a powerful battery. Highly flexible charging is possible either via USB or the charging station. When using the USB connection, the operating time may be increased even further.

**Lightweight and ergonomic design**

With a weight of only 330 g, **VISIOMED Optima** is a true lightweight that always ensures comfortable handling thanks to its ergonomic design. The high-quality finish makes cleaning easy.



# VISIONMED Optima – Model Comparison

	Polarized light	Non-polarized light	Directed light	Supports photodynamic diagnosis (PDD)	Wood's light exam	Several levels of illumination
VISIONMED Optima Daylight 	✓	✓	✓			✓
VISIONMED Optima UV 	✓			✓	✓	✓

### Polarized light

Polarized light reduces reflections and puts skin irregularities in the background. This allows a better evaluation of colors and contours, even in deeper dermal and epidermal structures.

### Non-polarized light

Non-polarized light is characterised by brightness, color fidelity and homogeneity. It is a strong and unadulterated type of illumination that brings light into darkness.

### Directed light

Directed light, either from the left or from the right side, makes considerably better assessment of skin structures possible, which is why this type of illumination is particularly suitable for raised lesions such as nodules or angiomas.

### Photodynamic diagnosis

Photodynamic diagnosis is used in dermatology to locate tumors and precancerous conditions. A cream or gel including the active substance 5-aminolevulinic acid (5-ALA) or a comparable ingredient is applied to the suspicious skin lesion. Fluorescence of the molecules is triggered by UV light exposure. Since the molecules selectively gather in cancerous cells, fluorescence allows locating and differentiating skin cancer and precancerous conditions. Thus, for instance, the preparation of an excision can be carried out in the best possible way.

### Wood's light exam

There is no need to bring any active substance when per-

forming a wood's light exam since this method triggers fluorescence of endogenous molecules. Different molecules are typical for certain diseases. This results in the fact that different symptoms show varicolored fluorescence. Therefore it is possible to draw conclusions about the disease, if fluorescence occurs.



### VISIONMED Optima offers you analytical support covering, inter alia:

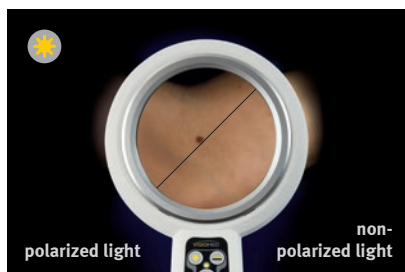
1. Actinic keratosis (age spots)
2. Melanocytic tumors such as melanomas
3. Vascular skin changes
4. Fungal infections (dermatophytosis)
5. Parasites and foreign bodies
6. Skin corrections

# VISIONMED Optima – Available to You in Two Variants

## VISIONMED Optima Daylight

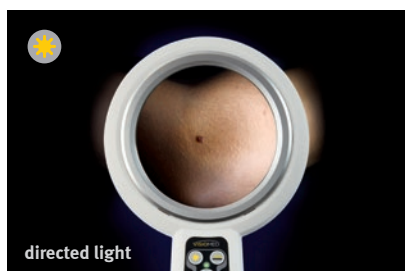


non-polarized light



polarized light

non-polarized light



directed light

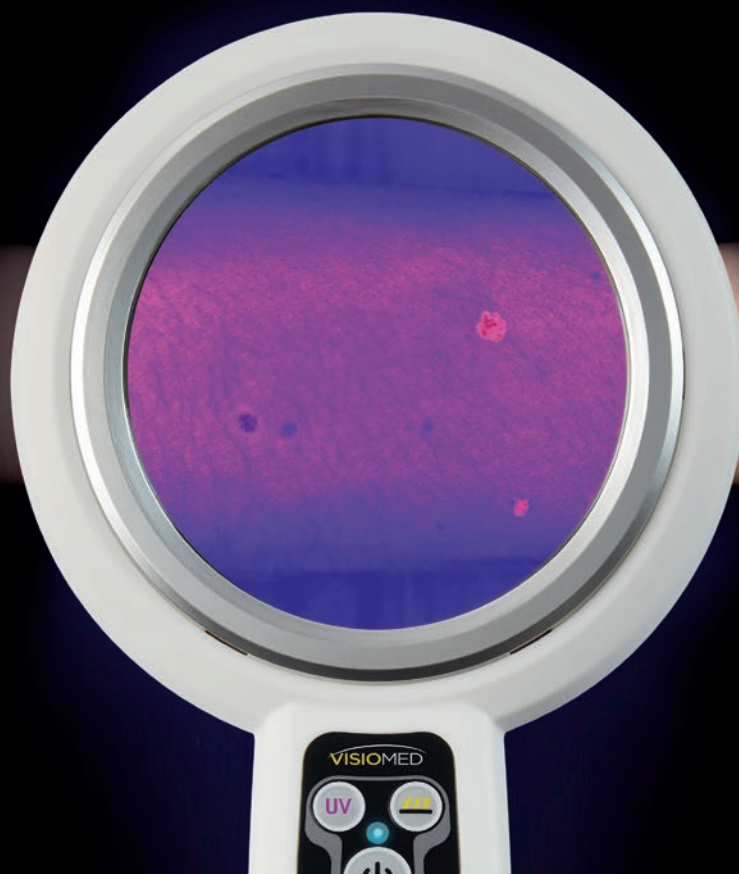
### VISIONMED Optima Daylight – For a Clear View

VISIONMED Optima Daylight offers you **three different modes** of lighting akin to daylight. You may choose between strong and homogeneous **non-polarized light** and **polarized light** for optimum screenings due to reduced reflections on the skin. **Directed lighting**, which particularly emphasises the skin's structures and profile, is additionally available.

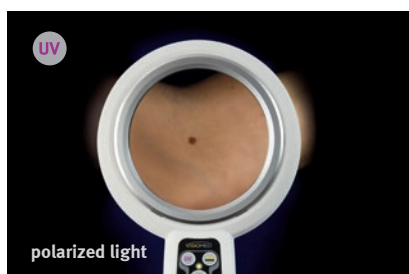
- ✓ Bright, homogeneous lighting
- ✓ Polarized light without reflections
- ✓ Distortion-free magnification

# VISIOMED Optima UV

UV



UV light

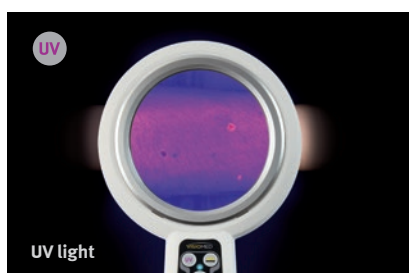


polarized light

## VISIOMED Optima UV – Expands the Spectrum

VISIOMED Optima UV offers you **polarized light** akin to daylight for optimum screenings and an **illumination in the UV range** for fluorescence diagnosis. The UV light is suitable for both photodynamic examinations of cancerous cells and **Wood's light exams** of bacterial, parasitic or fungal skin infection.

- ✓ Two lighting modes in one appliance
- ✓ Suitable for Wood's light exams
- ✓ Distortion-free magnification

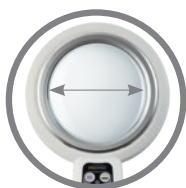


UV light

## Advantages at a Glance



Two lighting modes in one appliance



Maximum field of view for optimum screenings  
Diameter: 94mm



Charging possible via USB



Charging possible via charging station  
Optional base charging station



With protective cover made of robust nylon

### Canfield Scientific GmbH

Osningstraße 25  
33605 Bielefeld  
Germany

Phone +49 521 329 856 0 [europa.post@canfieldsci.com](mailto:europa.post@canfieldsci.com)  
Fax +49 521 329 856 40 [www.canfieldsci.com](http://www.canfieldsci.com)

Secured quality:  
designed and manufactured in  
accordance with the guidelines of  
ISO 9001/13485 and the German and  
European medicine product law (MPG).

©2018 Canfield Scientific, Inc. All rights reserved.  
The illustrations and descriptions in this information may contain  
partial accessories and special equipment. Changes, which serve  
technical progress, reserved.